

HD/4K Chamber Camera for ESPEC Environmental Test Chambers

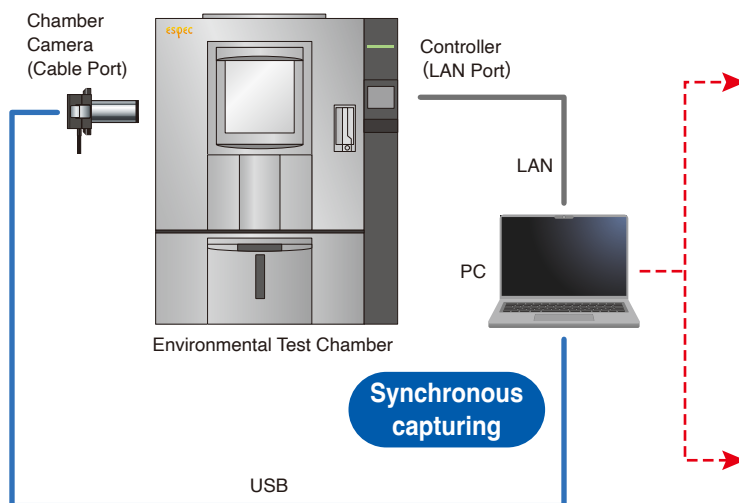
Useful for remote monitoring of test samples during test

Especially useful for monitoring samples those that may physically change while under test. HD Chamber Camera can record and capture images of the entire sample in the chamber. Suitable for monitoring overall changes. 4K Chamber Camera can provide ultra high-definition images of the surface shape and color changes of sample in the chamber. Ideal for visual evaluation of detailed condition of the sample during the test.

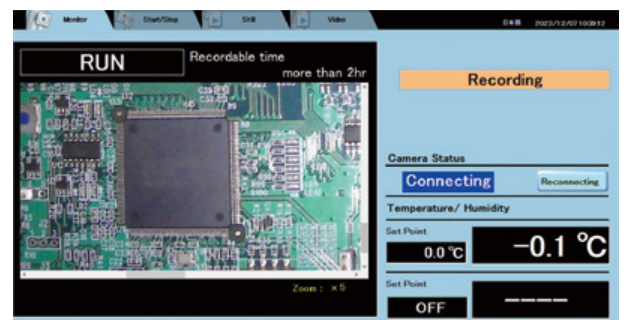


YouTube video Quick look

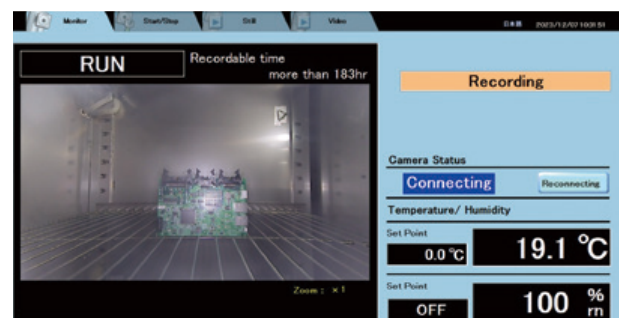
Application



Select the camera type to match your needs



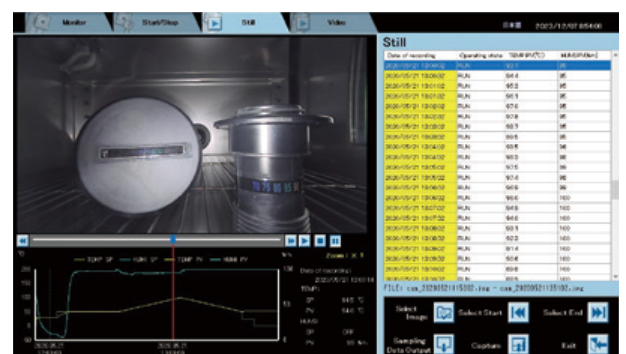
Sample view of upscaling image at 4K Chamber Camera



Sample view of entire test area at HD Chamber Camera

Features

- Can be used in harsh temperature and humidity conditions.
- Clear view inside test area
- Simple and easy installation
- Sync the chamber operation with the camera images



Camera

Product name	4K Chamber Camera	HD Chamber Camera
Model	SUC-1000-4K	SUC-0030-HD
Available chamber ※	Platinous J Series, Bench-Top Series, etc.	
Allowable range of use	Temperature: -40°C to +150°C Humidity:0 to 98%rh	
Resolution	4K (3840×2160)	HD (1280×720)
Interface	USB 2.0 ※Cable connection (USB Type A)	
Camera weight	Approx.750g	Approx.700g
Dimensions (mm)	W124×H98×D164	W124×H98×D156.5

※Controller P310 and P200. Cable port ϕ 50mm or ϕ 100mm is required.

※AC adapter: AC100 to AC230V with 5 types of conversion plugs

※2 types of adapters included (ϕ 50-D70 for Bench-Top Series, ϕ 100-D100 for ϕ 100 cable port)

※2 year warranty, CE standard, RoHS standard



4K Chamber Camera



HD Chamber Camera

Application (ES-ImageFit)

The dedicated application (ES-ImageFit) controls a Chamber Camera and performs synchronous capturing of sample images and chamber operation (test data/trend graphs).

Product name	4K Chamber Camera	HD Chamber Camera
Screen Specifications	Four screen settings: camera monitor, settings (video/still image), still image playback, and video playback	
PC Specs (OS/CPU)	Windows10/ core i5 or higher	
Zoom function	x1/x2/x4/x5	x1/x1.5/x2
Video	windows10/ core i5 or higher	
	Frame rate: 3 fps/5 fps	Frame rate: 5 fps/10 fps
Shooting time (reference) ※Free space: 250GB	File capacity: 57 MB/min (3 fps) Continuous shooting time: approx.73 hours (3 fps)	File size: 2.5 MB/min (5 fps) Continuous shooting time: approx.1,660 hours (5 fps)
Still image	Shooting interval: 1 sec to 60 sec *JPEG	
Shooting time (reference) ※Free space: 250 GB	File size: 2 MB/sheet Continuous shooting time: approx. 34 hours (1 sec/interval)	File size: 0.2 MB/sheet Continuous shooting time: approx. 340 hours (1 sec/interval)

Customized proposal: Remote monitoring and centralized management support

Images from Chamber Camera can be viewed remotely.

Please contact us for more details.