

Quality is more than a word

ESPEC

Vacuum Oven



Designed for vacuum heat treatment such as defoaming, degassing, curing and drying

Under a vacuum environment, the boiling point and drying temperature are lowered, which is useful to dry samples that are sensitive to heat.

The vacuum oven VAC achieves both energy conservation and high-temperature performance by improving the air-tightness and heat insulation of the chamber.

The controller is intuitive and comes with advanced programmable functions to control temperature and pressure.

Furthermore, it conforms to the CE marking and has a substantial safety design suitable for the global age.

VAC-301P



VAC-201P





VAC-101P

LCV-234P



The viewing window, emergency stop pushbutton, pirani vacuum gauge, and power meters are optional.(VAC)

A broad array of energy-saving mechanisms and support for wider range of vacuum drying treatments



The viewing window and emergency stop pushbutton are optional.

● Vacuum drying treatment for a wider array of uses

A vacuum (low-pressure) environment has a lower boiling point, allowing drying to be done at a lower temperature. The vacuum oven enables drying treatment at a lower temperature for specimens that cannot be treated by conventional high-temperature drying. Furthermore, the vacuum and N₂ gas exchange modes enable drying of oxidation-averse specimens, as well as drying and heat treatment within a clean environment by eliminating impurities in the chamber through repeated heat treatments or gas exchanges.

● A versatile equipment

The ovens are ideal for many applications, especially in electronic component production: defoaming when mixing silicone rubber or resins in LED manufacturing, deaerating during resin forming, hardening when injecting epoxy for hybrid ICs, or drying electronic components after washing.

● Uncompromising energy-saving mechanisms

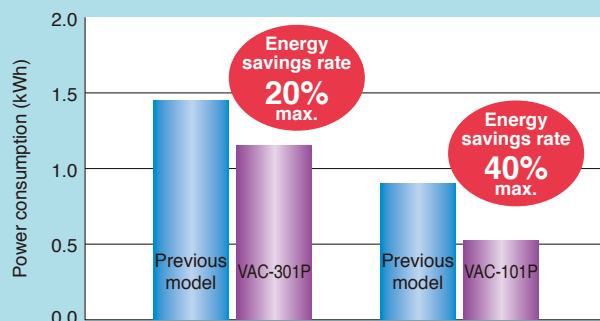
Power consumption was reduced through improved air-tightness and insulation achieved by using superior insulation materials and by changing both the door locking mechanism and the enclosure structure.

Air-tightness and insulation capacity have a significant impact not only on temperature control but also on pressure control. Through improvement of these properties, the VAC-101 achieves up to 40% energy savings.

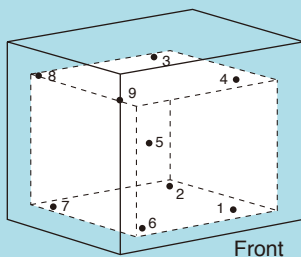
In addition, the enhanced air-tightness helps prevent a temperature rise in the surrounding area of the chamber.

● Power consumption comparison of vacuum pumps under automated operation mode

Example of application: Aircraft component testing
 Temperature setting: +200°C
 Pressure setting: 267×10²Pa



● Test area temperature uniformity measurement example



Model: VAC-301P
 Temperature setting: +200°C
 Pressure setting: 1×10²Pa
 Ambient temperature: +23°C
 Measurement point: 9
 Number of measurement: 10

Point	1	2	3	4	5	6	7	8	9	Uniformity
Temp. (°C)	+193.6	+194.2	+196.9	+197.2	+197.6	+190.4	+194.7	+198.4	+196.0	±1.9

Vacuum control modes suitable for a wide range of applications

- **Pressure operation modes to select for flexible programming.**

There are five operation modes available to select pressure control. A variety of programs can be designed by combining constant temperature operation and program operations. You can save up to 40 test programs each containing maximum of 99 steps.

- **Gas exchange operation mode prevents oxidation and eliminates impurities inside the chamber**

Oxygen inside the chamber can be removed by replacing the air with N₂ gas, preventing oxidation during the drying operation. In addition, a high-precision environment can be created by repeatedly performing the exchanges. This mode also removes organic substances in addition to preventing oxidation, reducing the impact on specimens.

- **Expert Mode demonstrates its capabilities in repeated high-volume processing (option)**

The depressurization schedule used is stored and can be called up for subsequent operations to ensure accurate processing. Expert Mode eliminates the fussing with valve controls for each process which makes it ideally suited for repeated high-volume processing of identical specimens.

- **Pressure operation modes**

mode	Details	Program and Typical pattern
Automated operation	Enables constant operation at a fixed pressure and ramp operation with programmed pressure increase and decrease times. ON/OFF of vacuum pump and atmosphere inlet valve are controlled automatically.	
Continuous operation	Enables continuous operation in a vacuum. The vacuum pump runs continuously.	
Open to atmosphere	Introduces atmospheric air into the chamber. Stops the vacuum pump and opens the atmosphere-inlet valve.	
Gas exchange	Repeatedly performs continuous operation and N ₂ gas introduction. Pressure value and number of replacements can be set for the exchange operation.	
Ventilation operation	Outside air can be introduced using the automated operation. The vacuum pump runs continuously.	
Expert (Option)	Pressure setting can be adjusted using a controller with learning function. Temperature and pressure settings can be saved and replicated in programmed operations.	



Pressure operation selection

Characteristics

Vacuum Oven VAC



Viewing window (option)

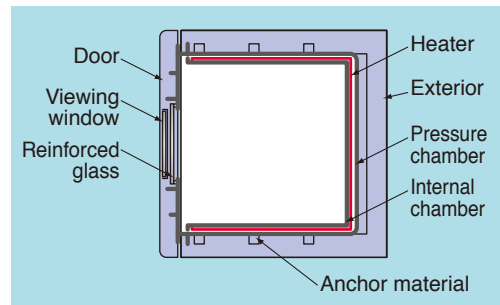
- **Viewing window for specimen observation (option)**

The viewing window is slightly curved to eliminate exterior reflections.

- **Double-wall construction for superior temperature uniformity**

The vacuum chamber features double-wall construction. A heater on the exterior of the test area minimizes heat loss and improves temperature uniformity.

This design allows even more uniform heat treatment and improves machine efficiency by reducing heat-up time.



Test area (The shelves and hermetic terminals are optional.)

- **International safety standard compliance**

Complies with safety of Machinery (ISO 12100), Low Voltage (IEC 60204-1), EMC (EN 61000-6-2, 55011). It is also RoHS.

Custom-made Equipment

Low Pressure Low Temperature Chamber



This equipment can perform low-pressure (altitude) tests in the UN Test Standards Manual on the assumption of air transportation.

System	Mechanical type single-stage refrigeration system	
Temperature range	-20°C to +80°C	
Temp. constancy	±0.5°C	
Temp. heat up time	+20°C to +80°C within 60 min.	
Temp. pull down time	+20°C to -20°C within 90 min.	
Temp. uniformity	+5°C (at +20°C, 11.6kPa)	
Pressure control range	93.3kPa to 10.1kPa	
Achieved pressure	Less than 10kPa	
Inside dimensions (mm)	W560 × H560 × D509	W800 × H800 × D709
Capacity	160 L	453 L

Easy-to-use, easy-to-read touch panel

● Tabbed user interface

The controller's new design includes tabs at the bottom of the screen to easily access any section and optimized layout. It also comes with an updated CPU with more power for improved process speed and calculation.

● Register test patterns

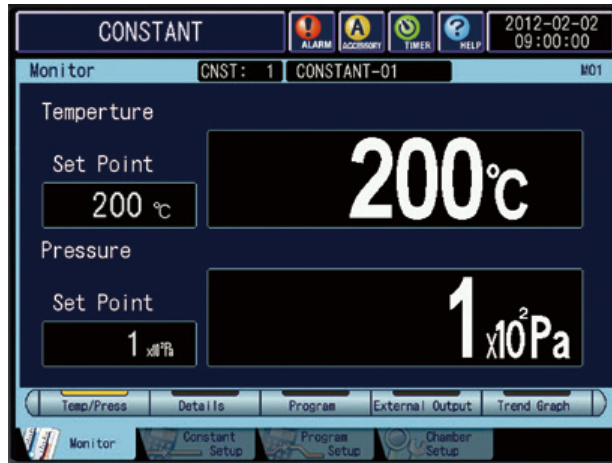
Up to 40 patterns for program operation and 3 patterns for constant operation can be registered.

● Program editing from a PC (option)

A USB port is available as an option, which allows you to transfer the test pattern that you programmed on a PC using the dedicated software via USB drive.

● Multi-lingual display

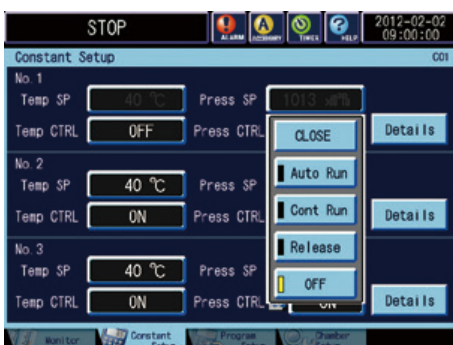
A simple operation changes display text to Japanese and Chinese (simplified). Select the language that suits your needs.



USB port (option)



Program settings



Constant values settings

P-Instrumentation

Operating mode	Constant operation, Program operation
Operation settings	<ul style="list-style-type: none"> Constant mode settings <ul style="list-style-type: none"> Available settings <ul style="list-style-type: none"> 3 patterns Settings range and resolving power <ul style="list-style-type: none"> Temperature 40 to 200°C, 1°C units Pressure 0 to 1013 × 10² Pa, 1 × 10² Pa units Program mode settings <ul style="list-style-type: none"> Available settings <ul style="list-style-type: none"> 40 patterns (max. 99 steps per pattern) Settings range and resolving power <ul style="list-style-type: none"> Temperature 40 to 200°C, 1°C units Pressure 0 to 1013 × 10² Pa, 1 × 10² Pa units Time 0 hr 0 min. 1 sec - 999 hrs 59 min. 59 sec, 1 sec units
Language	English, Japanese, Chinese (Simplified)
Auxiliary functions	<ul style="list-style-type: none"> Basic functions <ul style="list-style-type: none"> Operation control, alarm, information, accessory (integrating hour meter, feed valve/ventilation setting), help, chamber monitor (temperature pressure, external output, trend graph) Control setting functions <ul style="list-style-type: none"> Timer setting (start timer, end timer, quick timer), sampling setting, protection, alarm history display, version display, hour meter with reset, announcement Maintenance function <ul style="list-style-type: none"> Equipment operation settings (power outage recovery operation setting), settings criteria setting, time signal name entry, equipment details settings (external alarm, output setting), user password, date and time setting

SPECIFICATIONS

Model		VAC-101P	VAC-201P	VAC-301P
Pressure control system		PID control		
Temperature performance ^{*1}	Temperature range	+ 40 to + 200°C (+ 104 to + 392°F)		
	Temperature constancy	± 0.5°C (vacuum), ± 1°C (atmospheric)		
	Time to reach extreme temperature value ^{*2}	Within 50 min.	Within 70 min.	Within 80 min.
Pressure performance ^{*1}	Pressure range	933 × 10 ² to 1 × 10 ² Pa		
	Ambient pressure ^{*3}	Less than 133 Pa		
	Pull-down time ^{*3}	From atmospheric pressure to 133 Pa		
		Within 7 min.	Within 15 min.	Within 30 min.
	Atmospheric pressure recovery time ^{*4}	Inlet open to atmosphere		
Within 4 min.		Within 8 min.	Within 15 min.	
Construction	Exterior material	Cold-rolled steel with baked finish		
	Vacuum chamber	Stainless steel sheet (SUS430)		
	Internal chamber	Stainless steel sheet (NSS432)		
	Insulation	Glass wool		
	Heater	Mica heater		
	Inlet	R 1/4 inch, max. pressure 0.05 MPa (0.5 kg/cm ² G) or less		
	Exhaust port	OD φ 28 mm, rubber hose connection port		
Oil rotary vacuum pump	Motor	200V AC 1 φ 50/60Hz 550W	200V AC 3 φ 50/60Hz 550W	
	Pumping speed	200L/min. (50Hz), 240L/min. (60Hz)		
	Ultimate pressure	6.7 × 10 ⁻¹ Pa		
	Auxiliary functions	Gas ballast valve, oil mist trap		
Fittings		Leveling feet and casters (free wheel) 4pcs each, Time signal terminals × 2pcs		
Effective internal volume		91 L	216 L	512 L
Effective internal dimensions		W450 × H450 × D450 mm	W600 × H600 × D600 mm	W800 × H800 × D800 mm
Outside dimensions ^{*5}		W902 × H1392 × D782 mm	W1052 × H1542 × D932 mm	W1252 × H1762 × D1132 mm
Weight		320 kg	400 kg	610 kg
Shelf support load resistance ^{*6}		up to 100kg (30kg/ stage, Total load of 5 stages)		up to 100kg (20kg/ stage, Total load of 5 stages)
Test area load resistance ^{*6}		up to 100kg		
Allowable ambient conditions		+ 12 to + 35°C (+ 41 to + 95°F)		
Power supply	200V AC 1 φ 50/60Hz	14.2 A	18.9 A	—
	200V AC 3 φ 50/60Hz	10.7 A	13.9 A	14.2 A
	220V AC 1 φ 50/60Hz	13.2 A	17.5 A	—
	220V AC 3 φ 60Hz	—	—	13.2 A
	230V AC 1 φ 50/60Hz	12.8 A	16.9 A	—
	380V AC 3 φ 50Hz CE	—	—	8.2 A
	400V AC 3 φ 50Hz CE	—	—	7.9 A

*1 Performance figures are given for a + 23°C ambient temperature, rated voltage, and no specimen inside the test area.

*2 Set point is 200°C. Time it takes for the center of the chamber's temperature to increase from 40°C to 200°C under vacuum.

*3 Fixed temperature inside the chamber, vacuum pump connected with exhaust speed of more than 200L/min. and ultimate pressure of 13 × 10⁻² Pa or less, no gases emitted from specimen.

*4 Recovery time to atmospheric pressure (1013 × 10² Pa) to 1010 × 10² Pa, recovery time may fluctuate depending on atmospheric pressure.

*5 Excluding protrusions.

*6 Includes shelf weight.

SAFETY DEVICES

- Leakage breaker
- Control panel door switch
- Back cover switch
- Control circuit overcurrent protection
- Control circuit short circuit protection cartridge fuse
- System error (error)
- System error (caution)
- Room temperature compensation burnout detection circuit
- Temperature sensor burnout detection circuit
- Pressure sensor burnout detection circuit
- Reverse-prevention relay
- Thermal fuse
- Heater overcurrent protector
- Vacuum pump overload protector
- Motor valve operation failure alarm function (built-in temperature/pressure controller)
- Alarm function that indicates pressure has not been reached (with built-in temperature/pressure controller)
- Absolute upper/lower temperature limit alarm (built-in temperature/pressure controller)
- Absolute upper/ lower pressure limit alarm (built-in temperature/pressure controller)
- Overheat protector
- Absolute upper/lower temperature deviation alarm function (temperature/pressure controller)
- Absolute upper/lower pressure deviation alarm function (temperature/pressure controller)
- Specimen power supply control terminal

ACCESSORIES

- Breaker handle stopper 1
- Cartridge fuse (3A) 1
- User's manual 1
- Warranty card 1

* Shelves and power cables are not included.

OPTIONS (VAC)

Expert Mode

The jog dial can be used to precisely control, record, and reproduce depressurization.



Atmospheric pressure recovery time reduction

An atmospheric release valve with larger piping port is added. The valve opens and closes manually.

Atmospheric pressure recovery time:
within 2 min.

*The optional air filter cannot be fitted.

Pirani vacuum gauge

Pressure is displayed digitally, while this gauge is used to measure pressure accurately below 2700 Pa.

Measurement range: 0.4 to 2700 Pa

Measurement precision:
within $\pm 3\%$ of full-scale
(converted to linear scale)



Hermetic terminals for voltage application

Used when applying voltage to specimens.

Specifications: Hermetic terminal
(four-core)

Max. current: 6 A

Max. voltage: 200V AC, 250V DC

Mounted location: Oven rear side

* Maximum 4 (total quantity of both thermocouple and impressed voltage combined).

Hermetic terminals for thermocouples

Used for connection to thermocouples from specimens or chamber interior.

Specifications: Hermetic terminal
(eight-core, four pairs)

Mounted location: Oven rear side

* Maximum 4 (total quantity of both thermocouple and impressed voltage combined).



for thermocouples

Recorder output terminal

This terminal outputs the test area temperature and pressure via 1 to 5V DC linear output.

Temperature: $+20^{\circ}\text{C}$ to $+220^{\circ}\text{C}$

Pressure: 0 to 106.7 kPa

OPTIONS (VAC)

Paperless recorder

Records temperature and pressure inside the chamber. Additional inputs may also be recorded.

Display: 5.7inch color touch panel

Temperature range: +20 to +220°C

Pressure range: 0 to 106.7kPa

Number of inputs:

Temperature 1

Pressure 1

(4 more channels can be turned ON)

Scan interval: 5 sec

Internal memory: 8MB

External memory media:

CF memory card

(Includes a 256MB CF card)

External memory function: USB port



Temperature and pressure recorder

Records the oven internal temperature and pressure.

Temperature range: +20 to +220°C

Pressure range: 0 to 106.7 kPa

Input: Temperature (× 1),

Pressure (× 1)

Recording method: Dot

Absolute pressure sensor

The standard gauge pressure is replaced by absolute pressure sensor as pressure indication method.

External alarm terminal

If the safety device of the chamber is activated, external alarm terminal will notify it to a remote point.

Power capacity: 250V AC, 3A

Operation: Connection output when error occurs (closed)

Mounted location:

Oven rear side (above inlet)

Time up output

A contact signal is sent when a step in the program changes, or when the program ends.

External device alarm input terminal

When the chamber is interlocked with an external device, this option is used to stop chamber operation when an error is issued from the external device.



Status indicator light

Illuminates to indicate errors when the safety device activates.

Emergency stop pushbutton

Stops the chamber immediately.



Operation status indicator

The LED light above the instrumentation panel indicates the chamber status.

Door with viewing window

Used for observation of the specimens inside the chamber.

Size : W324×H336 mm



Power meter

Displays the integral power consumption for the chamber.



Floor reinforcement

To enhance the floor load capacity inside the chamber. Machinery compartment is also reinforced.

OPTIONS (VAC)

Air filter

Filtering air introduced into the chamber.
 Port size: 0.2 μm
 Pressure resistance: 4.2 kg/cm²
 Connector port: NPT 1/8, male screw
 Location: Air inlet

Vacuum pump oil

Model: SMR-100 (500mL × 2)

Cold trap

Cools and removes moisture and organic solvents contained in the outside air before being drawn into the vacuum pump. (Separate from oven)
 Outside dimensions:

W300 × H835 × D350 mm

* This option does not comply with RoHS Directive.

Vacuum pump exhaust port

Exhaust gas from vacuum pump outside.

External connection port:

NW25 (ISO standard)

Connection:

Quick coupling

Center ring with O-ring (not provided)

Location: Rear side

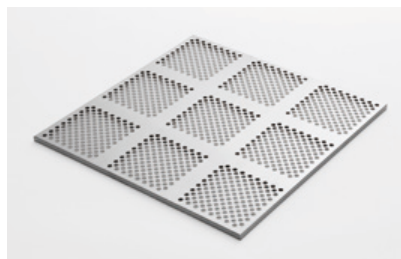
Removal of pump

The standard fitted vacuum pump is removed. Terminal block for vacuum pump power supply and pump intake port connection hose are prepared inside the chamber.

* the chamber main unit weight, electric current, and power supply voltage will be changed.

Stainless steel shelf

Stainless steel punching plate
 Max. allowable number of shelves:
 Up to 5 shelves



Model	W (mm)	D (mm)	Load resistance* Up to (kg)	Shelf weight (kg)
VAC-101P	435	435	30	1.6
VAC-201P	585	585	30	2.7
VAC-301P	785	785	20	4.8

* Shelf load resistance : Equally distributed load
 Total load weight : Up to 100 kg

Heavy-duty shelf

Used to hold heavy specimens exceeding the load capacity of the standard shelf.

Load resistance: 40 kg/level

(Equally distributed load)

Shelf weight: 2.7kg (VAC-201P)

5.6kg (VAC-301P)

Max. allowable number of shelf:

up to 4 shelves

Test area load resistance :

160kg(Includes shelf weight)

* VAC-201P and 301P only

USB external memory port

Logging, and program reading & writing are available.



Interface

Communication ports to connect the chamber to a PC.

- RS-485
- RS-232C
- GPIB

Communication cables

- RS-485 5m/ 10m/ 30m
- GPIB 2m/ 4m

Power cable

- 2.5m
- 5m
- 10m

* 200V/ 220V/ 230V AC only

CE marking

VAC-101P: 200V 1φ 200V 3φ

220V 1φ 230V 1φ

VAC-201P: 200V 1φ 200V 3φ

220V 1φ 230V 1φ

VAC-301P: 200V 3φ 220V 3φ

* This CE marking option is not necessary for the VAC-301P with 380V 3φ or 400V 3φ option which is already including CE marking.



LCV-234P



● Direct heating system for fast vacuum-dry

In addition to the gas exchange function, it can treat specimens in oxygen-free environment using nitrogen or other gases, and supports baking, degassing, hardening, deaeration, and other applications.

● Color LCD touch panel

N-Instrumentation with 4.3-inch touch panel display comes with originally designed human-machine-interface that allows easy navigation throughout its functions. The touch panel is pressure sensitive resistive type which allows you to operate even with gloves on.

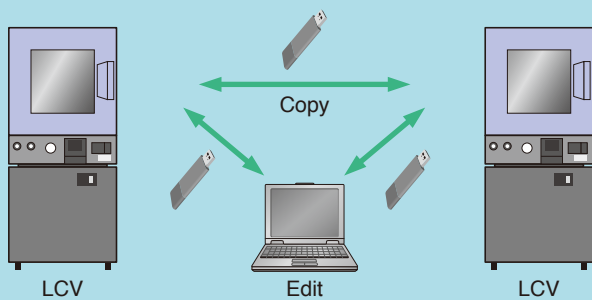
● Remote monitoring and control (Ethernet connection)

Taking advantage of an Ethernet connection makes it possible to check the operation status from a remote location.

Web browser access allows users to edit program patterns registered in the chamber and to monitor temperatures.

*Vacuum control requires operation of a valve on the chamber.

● Program Copy and Computer Editing



● Copy test profiles

Share the test profiles among chambers via USB memory* instead of PC.

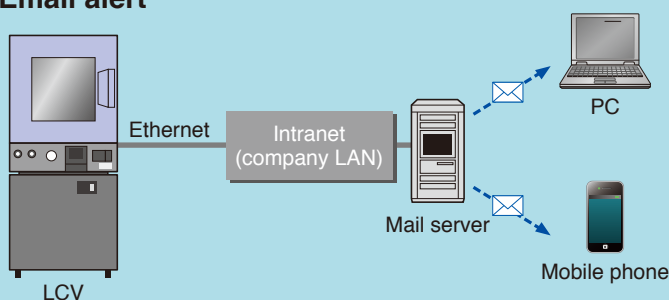
* USB memory not included.

● E-mail notifications

Details on alarms that have been triggered will be sent to pre-registered e-mail addresses. It is also possible to transmit e-mails when testing has finished.

* An Intranet environment is required to transmit e-mails.

● Email alert



SPECIFICATIONS

Model	LCV-234	LCV-244
System	Direct PID control	
Vacuum control	Manual LEAK-VACUUM balance system	
Performance ^{*1}	Temperature range	
	Ambient + 20°C to + 200°C (± 392°F)	
	Pressure range	
	0 to -101kPa (Gauge)	
Temperature fluctuation ^{*2}	± 1.0°C	
	(at atmospheric pressure) Ambient temperature + 23°C to + 200°C (± 392°F) (set: + 210°C)	
Temperature heat-up time ^{*2}	Within 70 min.	Within 110 min.
	Internal material	
18-8 Cr-Ni stainless steel plate		
Vacuum gauge	Bourdon tube vacuum gauge Vacuum indication accuracy: ± 1.6kPa	
Heater	Mica heater	
Equipment	Power cable, Ethernet port (LAN port), External memory port, Viewing window, Shelf bracket	
Volume	90 L	165 L
Inside dimensions	W450 × H450 × D450 mm	W550 × H550 × D550 mm
Outside dimensions ^{*3}	W670 × H890 × D735 mm	W770 × H990 × D835 mm
Weight	170 kg	250 kg
Shelf support load resistance	30 kg	
Test area load resistance	30 kg	
Power supply	AC200V 3 φ 50/60Hz	
Maximum current	8A	9A

*1 Figures for an ambient temperature of + 23°C relative humidity 65%rh, rated voltage and with no specimen in the chamber.

*2 Based on IEC 60068-3-5:2006

*3 Excluding protrusions

Vacuum Oven with vacuum pump (Specification for Vacuum Oven is the same as stated above.)

Model	LCV-234P	LCV-244P
Vacuum pump performance	Direct coupled oil—sealed vacuum pump 6.7 × 10 ⁻² Pa (abs) with gas ballast valve closed 0.67Pa (abs) with gas ballast valve open	
Power supply	AC200V 3 φ 50/60Hz	
Exhaust speed (effective) ^{*1}	200/ 240L/ min.	
Outside dimensions ^{*2}	W670 × H1540 × D735 mm	W770 × H1640 × D835 mm
Weight	240 kg	320 kg

*1 Individual performance rate of vacuum pump.

*2 Excluding protrusions

SAFETY DEVICES

- Leakage breaker
- Cartridge fuse for control circuit short-circuit protection
- System error (Error)
- System error (Alarm)
- Room temperature compensation burnout detection circuit
- Dry bulb temperature burnout detection circuit
- Thermal fuse
- Absolute upper/lower temperature limit alarm (with built-in temperature controller)
- Overheat protector
- Temperature upper limit deviation alarm (with built-in temperature/humidity controller)

ACCESSORIES

- Shelf (Stainless steel) 3

Model	W (mm)	D (mm)	Shelf load resistance up to (kg) *
LCV-234	440	430	5
LCV-244	540	520	

* Equally distributed load

- Cartridge fuse (B type 250V 5A) 1
- Breaker handle stopper 1
- Stylus pen 1
- User's manual 1
- Warranty card 1

OPTIONS (LCV)

Hermetic terminals for voltage application

Used when applying voltage to specimens.

Specifications: Hermetic terminal (four-core)

Max. current: 6 A

Max. voltage: 200V AC, 250V DC

Mounted location: Oven rear side

* Maximum 5 (total quantity of both thermocouple and impressed voltage combined).

Hermetic terminals for thermocouples

Used for connection to thermocouples from specimens or chamber interior.

Specifications: Hermetic terminal (eight-core, four pairs)

Mounted location: Oven rear side

* Maximum 5 (total quantity of both thermocouple and impressed voltage combined).



Specimen power supply control terminal

Terminals that are used to supply power to the specimen. When chamber operation stops due to a problem, power to the specimen is interrupted.

* This option is always used when the power is supplied to specimen placed inside the chamber.

Reverse flow prevention valve

The valve prevents lubricating oil inside vacuum pump from reverse flow when chamber is under vacuum state.

* LCV-234P, 244P models only.

Shelf, Shelf bracket

Equivalent to standard accessory.



Chamber stand

The stand is equipped with casters enabling the chamber to move easily.

* Standard equipment in LCV-234P, 244P models.

Interface

Communication ports to connect the chamber to a PC.

- RS-485
- RS-232C
- GPIB



Safety precautions

- Do not use specimens which are explosive or inflammable, or which contain such substances. To do so could be hazardous, as this may lead to fire or explosion.
- Do not place corrosive substances in the chamber. If corrosive substances are generated by the specimen, the life of the chamber may be significantly shortened specifically because of the corrosion of stainless steel and copper and because of the deterioration of resin and silicon.
- Do not place life forms.
- Be sure to read the user's manual before operation.

■ Some photographs listed in this catalog contain Japanese display.

ESPEC CORP. <https://www.espec.co.jp/english>

Head Office

3-5-6, Tenjinbashi, Kita-ku, Osaka 530-8550, Japan
Tel: 81-6-6358-4741 Fax: 81-6-6358-5500

ESPEC NORTH AMERICA, INC.

Tel: 1-616-896-6100 Fax: 1-616-896-6150

ESPEC EUROPE GmbH

Tel: 49-211-361850-0

ESPEC ENVIRONMENTAL CHAMBERS

SALES AND ENGINEERING LTD. STI. (Turkey)

Tel: 90-212-438-1841 Fax: 90-212-438-1871

ESPEC ENVIRONMENTAL EQUIPMENT (SHANGHAI) CO., LTD.

Head Office

Tel: 86-21-51036677 Fax: 86-21-63372237

BEIJING Branch

Tel: 86-10-64627025 Fax: 86-10-64627036

GUANGZHOU Branch

Tel: 86-20-83317826 Fax: 86-20-83317825

SHENZHEN Branch

Tel: 86-755-83674422 Fax: 86-755-83674228

SUZHOU Branch

Tel: 86-512-68028890 Fax: 86-512-68028860

TIANJIN Branch

Tel: 86-22-26210366 Fax: 86-22-26282186

XI'AN Branch

Tel: 86-29-88312908 Fax: 86-29-88455957

CHENGDU Branch

Tel: 86-28-88457756 Fax: 86-28-88474456

WUXI Branch

Tel: 86-510-82735036 Fax: 86-510-82735039

ESPEC TEST TECHNOLOGY (SHANGHAI) CO., LTD.

Tel: 86-21-68798008 Fax: 86-21-68798088

ESPEC ENGINEERING (THAILAND) CO., LTD.

Tel: 66-3-810-9353 Fax: 66-3-810-9356

ESPEC ENGINEERING VIETNAM CO., LTD.

Tel: 84-24-22208811 Fax: 84-24-22208822

ISO 9001 (JIS Q 9001)

Quality Management System Assessed and Registered

ESPEC CORP. has been assessed by and registered in the Quality Management System based on the International Standard ISO 9001:2015 (JIS Q 9001:2015) through the JSA Solutions Co.,Ltd.

* The organization of these certificates is
ESPEC CORP. Japan.



ISO 27001 (JIS Q 27001)

Quality Management System Assessed and Registered

* The organization of these certificates is
ESPEC CORP. Japan.



ISO 14001 (JIS Q 14001)

Environmental Management System Assessed and Registered

* The organization of these certificates is
ESPEC Group Japan.



●Specifications are subject to change without notice due to design improvements.

●Corporate names and trade names mentioned in this catalog are trademarks or registered trademarks.